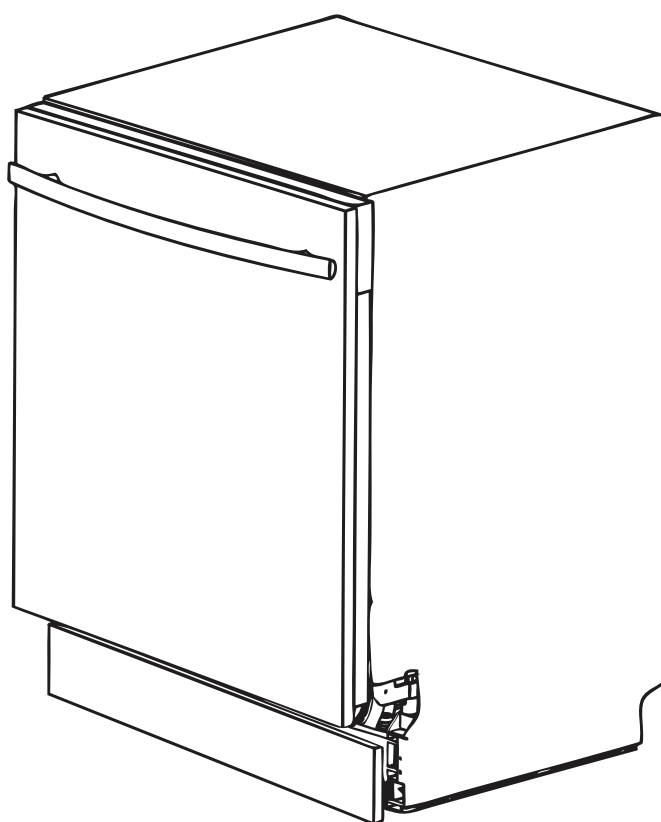




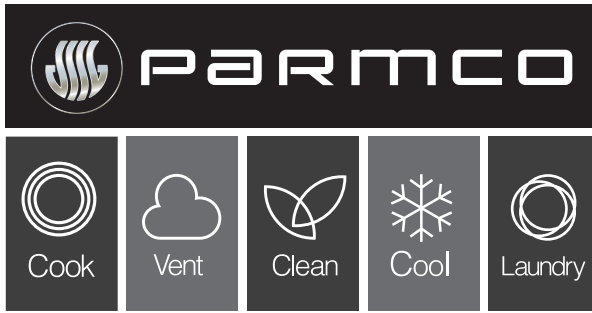
Installation and Operating Instructions

Models:
PD6-PIT-1



As part of Parmco Appliances commitment to improving and updating product ranges, we reserve the right to alter, change and update technical specifications and appearance attributes of all Parmco Appliances products. E&OE.

727626062017



p: 09 573 5678
f: 09 573 5699
e: sales@parmco.co.nz
w: www.parmco.co.nz

Parmco Appliances

extended 3 year

warranty

The Warranty:

- This appliance is intended for domestic use in the owners' home. Use of the appliance for commercial purposes will limit the warranty period (please see Parmco website for commercial details).
- Subject to the terms and conditions contained within this warranty, if the product is not of Acceptable Quality (as defined in the Consumer Guarantees Act) within 3 years of the date of original purchase, then Parmco Sales undertakes to repair or, at its sole discretion, replace the product.
- The warranty does not cover the costs of transport, mileage or travelling time if the product is located beyond 30km of a recognised Service Agent.
- This warranty is offered as an extra benefit, and does not affect other legal rights, which can not be modified or excluded by agreement.
- This warranty only applies to goods supplied and installed in the North and South Islands of New Zealand.
- The provisions of this warranty are in addition to the rights and remedies available to consumers under the Consumer Guarantees Act 1993.

Product _____ Date of purchase _____
Serial Number _____
Dealer / Retailers Name _____

Please retain this Warranty card together with receipt or other proof of purchase date when seeking service during the warranty period

Please contact Parmco at 09 573 5678 if your appliance needs servicing under warranty. Please have your model number and proof of purchase ready. Warranty repairs must be authorized by Parmco.



The Warranty is not valid:

- If the product is not installed and operated in accordance with the operating instructions.
- If the product is not installed to comply with the electrical, gas, plumbing and other Regulations and Codes of Practice in New Zealand.
- If the product is operated on voltages or frequencies outside the normal range for domestic appliances in New Zealand.
- If the product is not used in normal domestic use, or if it is used in a business as defined in the Consumer Guarantees Act.
- If any serial number has been removed or defaced.
- If proof of date of purchase is not supplied, except at the sole discretion of Parmco Sales. Proof of purchase can be for the product itself, or if installed with a kitchen or house then proof of purchase can be from a Parmco reseller of products supplied by Parmco.
- If the products are purchased in a second hand condition from other parties (including but not limited to TradeMe, Sella, etc.)

Liability under this warranty will not be accepted for:

- Wear and tear caused by normal domestic use of the product.
- Damage in transport.
- Damage caused to the product by neglect, abuse, negligence, wilful act or misuse.
- Any costs associated with the repair, replacement, removal or reinstallation of products installed in a damaged condition.
- Any defect caused by accident, misuse, neglect, tampering with or unauthorised modifications of the appliance or any attempt at internal adjustment or repair by any person other than an Authorised Service Agent.
- Service calls that relate principally to the following:
 - Instruction on how to use the product.
 - Repair or replacement of house fuses, electrical wiring, gas fitting or plumbing.
 - Normal or scheduled maintenance including blocked filters or ducting.
 - Consumable items such as light bulbs.
 - Any damage to hobs caused by spills when cooking.
 - Any breakage or damage of glass items.
 - Any damage caused by non recommended product used for cleaning, maintaining, lubricating or similar.
 - Any aspect relating to the installation of the product, or damage caused during installation including blocked access for repair.
 - Any third party (including reseller) or consequential loss or damage (direct or indirect) however arising.



Dear Valued Customer,

Thank you and congratulations on purchasing your new Parmco appliance.

All Parmco products are made to the highest quality and design standards. We are sure you will enjoy your new appliance.

As a note, please read through these instructions carefully, as these will assist you in gaining a complete understanding of the functions and features offered by your appliance.

Please take special note of all detailed technical information and installation instructions. It is essential that you only allow a qualified technician to install this appliance to ensure the safety and reliability of this appliance.

Furthermore, not using appropriate personnel to install this appliance may affect any future warranty claims lodged, so please check with Parmco Appliances before any installation is carried out.

We hope you enjoy your new appliance. If you would like to find out more about this product or any other products in Parmco's extensive range, visit us on the web at www.parmco.co.nz.

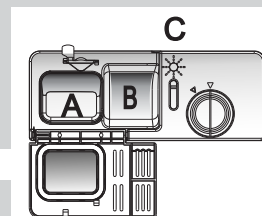
Regards,
The Parmco Team



Quick operation guide

For detailed operating instructions, read the corresponding section of this manual.

Switch on the appliance	Press the ON/OFF button to switch on the appliance. Open the door.
Fill the detergent dispenser	<p>Compartment A: For each wash cycle.</p> <p>Compartment B: For programs with pre-wash only. (Follow the user instructions!)</p>
Check the rinse aid level	<p>Mechanical indicator C: Electric indicator on control panel.</p>
Load the baskets	Scrape off any large amounts of leftover food. Soften remnants of burnt food in pans, then load the baskets. Refer to the dishwasher loading instructions.
Select a program	Press the Program button until the selected program lights up (see the section entitled "Operating Instructions").
Starting the dishwasher	Close the door, turn on the water tap and press the Start/Pause button. The machine will start working after about 10 seconds.
<ul style="list-style-type: none"> Changing the program Add forgotten dishes in the dishwasher If the appliance is switched off during a wash cycle 	<ul style="list-style-type: none"> 1. A running cycle can only be modified if it has only been running for a short time. Otherwise the detergent may have already been released and the water already drained. If this is the case, the detergent dispenser must be refilled. 2. Press the Start/Pause button, then press the program button for more than 3 seconds to cancel the running program. 3. Select a new program. 4. Restart the dishwasher. <ul style="list-style-type: none"> 1. Open the door a little to stop the dishwasher. 2. After the spray arms stop working, you can open the door completely. 3. Add the forgotten dishes. 4. Close the door, the dishwasher will start running again after 10 seconds. <ul style="list-style-type: none"> If the appliance is switched off during a wash cycle: when switched on again, re-select the washing cycle and operate the dishwasher according to the original Power-on state.
Switch off the appliance	When the working cycle has finished, the buzzer of the dishwasher will sound 8 times, then stop. Turn off the appliance using the ON/OFF button.
Turn off the water tap, unload the baskets	Warning: wait about 15 minutes before unloading the dishwasher to avoid handling the dishes and utensils while they are still hot and more susceptible to breakage. They will also dry better. Unload the appliance, starting from the lower basket.



⚠ WARNING!

Open the door carefully. Hot steam may escape when the door is opened.



Read this Manual

Dear Customer,

- This appliance is intended for domestic household use and similar applications such as:
 - staff kitchen areas in shops, offices and other working environments;
 - farm houses;
 - by clients in hotels, motels and other residential type environments.
-
- Please read this manual carefully before using the dishwasher. It will help you to use and maintain the dishwasher properly.
 - Keep it as a reference for the future.
 - Pass it on to any subsequent owner of the appliance.

This manual contains sections on Safety Instructions, Operating Instructions, Maintenance and Cleaning, Installation Instructions and Troubleshooting Tips.



- Reviewing the section on Troubleshooting Tips will help you solve some common problems by yourself.
- If you cannot solve the problems by yourself, please ask for the help of professional technicians.



NOTE:

The manufacturer, following a policy of constant development and updating of the product, may make modifications without giving prior notice.

1) Safety Information	1
2) Operating Instructions.....	2
Control Panel.....	2
Dishwasher Features.....	2
3) Prior to Using for the First Time.....	3
Fill the Rinse Aid Dispenser.....	3
Function of Detergent	4
4) Loading the Dishwasher Basket.....	6
Attention before or after loading the Dishwasher Baskets.....	6
The Method of Loading Normal Dishware.....	7
5) Starting a Washing program.....	8
Wash Cycle Table.....	8
Turning on the Appliance.....	8
Change the program.....	9
At the End of the Wash Cycle.....	9
6) Maintenance and Cleaning.....	10
Filtering System.....	10
7) Installation Instructions	12
Installation Preparation.....	12
Aesthetic Panel's Dimensions & Installation..	13
Tension Adjustment of the Door Spring.....	15
Drain Hose Connection.....	15
Dishwasher Installation Steps.....	16
About Electricity Connection.....	17
Cold Water Connection.....	18
Start of Dishwasher.....	18
8) Troubleshooting Tips.....	19
Before Calling for Service.....	19
Error Codes.....	20
Technical Information.....	21
Loading the Baskets.....	22, 23

1. IMPORTANT SAFETY INFORMATION

READ ALL OF THE INSTRUCTIONS BEFORE USING

⚠ WARNING! When using your dishwasher, follow the precautions listed below:



GROUNDING INSTRUCTIONS

- This appliance must be grounded. In the event of a malfunction or breakdown, grounding will reduce the risk of an electric shock by providing a path of least resistance of electric current. This appliance is equipped with a cord with an equipment-grounding conductor and a grounding plug.
- The plug must be plugged into an appropriate outlet that is installed and grounded in accordance with all local rules and regulations.

⚠ WARNING!

- Improper connection of the equipment-grounding conductor can result in the risk of an electric shock.
- Check with a qualified electrician or service agent if you are in doubt whether the appliance is properly grounded. Do not modify the plug provided with the appliance. If it does not fit the outlet, have a proper outlet installed by a qualified electrician.



WARNING! PROPER USE

- Do not sit or stand on your dishwasher's door to prevent damages or personal injuries.
- Do not operate your dishwasher unless all enclosure panels are properly in place. Open the door very carefully if the dishwasher is operating as there is a risk of water squirting out.
- Do not place any heavy objects on or stand on the door when it is open. The appliance could tip forward.
- When loading items to be washed:
 - 1) Place sharp items so that they are not likely to damage the door seal.
 - 2) Warning: knives and other utensils with sharp points must be loaded in the basket with their points down or placed in a horizontal position.
- Check that the detergent compartment is empty after completion of the wash cycle.
- Do not wash plastic items unless they are marked dishwasher safe or the equivalent. For plastic items not so marked, check the manufacturer's recommendations.
- Use only detergent and rinse additives designed for an automatic dishwasher.
- Never use soap, laundry detergent, or hand washing detergent in your dishwasher. Keep these products out of the reach of children.
- Keep children away from detergent and rinse aid. Keep children away from the open door of the dishwasher as there could still be some detergent left inside.
- This appliance is not intended for use by persons (including children) with reduced physical, sensory or mental capabilities, or lack of experience and knowledge, unless they have been given supervision or instruction concerning the use of the appliance by a person responsible for their safety.
- Children should be supervised to ensure that they do not play with the appliance.
- Dishwasher detergents are strongly alkaline and can be extremely dangerous if swallowed. Avoid contact with skin and eyes, and keep children away from the dishwasher when the door is open.
- The door should not be left open, since this could increase the risk of tripping.
- If the supply cord is damaged, it must be replaced by the manufacturer, its service agent, or a similarly qualified person in order to avoid a hazard.
- Remove the door to the washing compartment when removing an old dishwasher from service or discarding it.
- Please dispose of packaging materials properly.
- Use the dishwasher only for its intended function.
- During installation, the power supply must not be excessively or dangerously bent or flattened. Do not tamper with controls.
- The appliance is to be connected to the water mains using new hose sets and old hose sets should not be reused.
- The maximum number of place settings to be washed is 14.
- The maximum permissible inlet water pressure is 1Mpa.
- The minimum permissible inlet water pressure is 0.04Mpa.

READ AND FOLLOW THIS SAFETY INFORMATION CAREFULLY
KEEP THESE INSTRUCTIONS

2. Operating Instructions

! IMPORTANT To get the best performance from your dishwasher, read all operating instructions before using it for the first time.

Control Panel



1. Display Window: program, fill rinse aid, dual zone wash, remaining time, delay time, fault codes, etc.

2. Alt Button: dual zone wash - press the button to select either upper or lower basket, and the response indicator will blink accordingly.

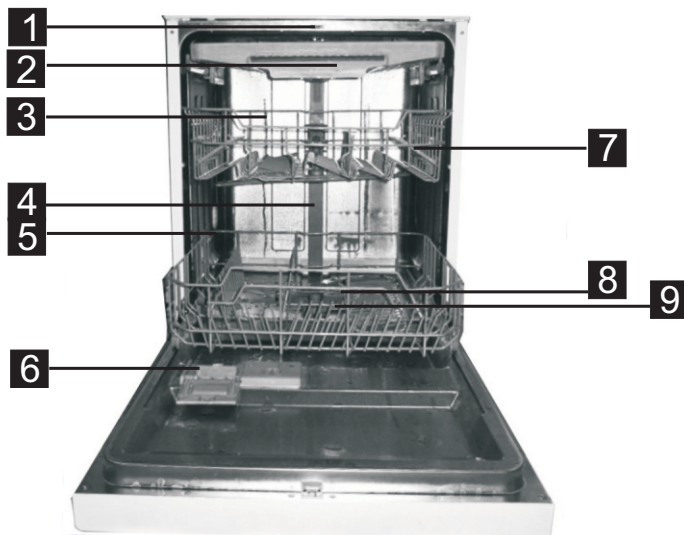
3. Delay Button: to delay. You can delay the start of washing between 1 to 24 hours.

4. Program Button: to select a wash program.

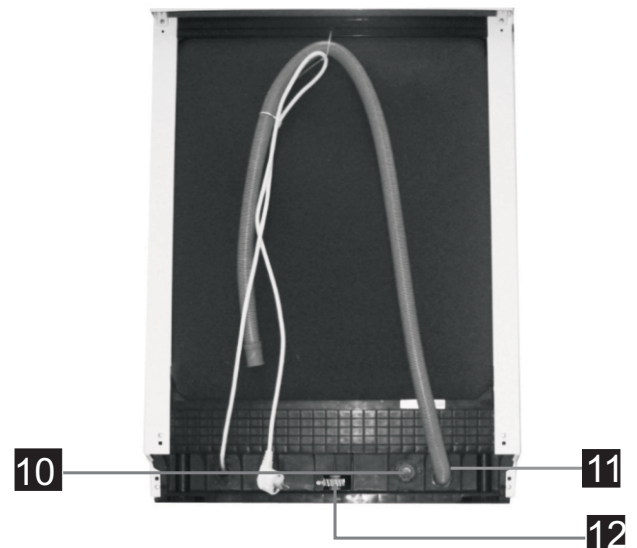
5. ON/OFF Button: to turn on/off the power supply.

Dishwasher Features

Front View



Back View



1 Top spray arm

2 Cutlery rack

3 Upper basket

4 Inner pipe

5 Lower basket

6 Dispenser

7 Cup shelf

8 Spray arms

9 Filter assembly

10 Inlet pipe connector

11 Drain pipe

12 Adjuster

3. Prior to Using for the First Time

Before using your dishwasher for the first time:

- A** Fill the rinse aid dispenser
- B** Fill in detergent

A. Fill the Rinse Aid Dispenser

Rinse Aid Dispenser

The rinse aid is released during the final rinse to prevent water from forming droplets on your dishes, which can leave spots and streaks. It also improves drying by allowing water to roll off the dishes. Your dishwasher is designed to use liquid rinse aids. The rinse aid dispenser is located inside the door next to the detergent dispenser. To fill the dispenser, open the cap and pour the rinse aid into the dispenser until the level indicator turns completely black. The volume of the rinse aid container is about 110ml.

Function of Rinse Aid

Rinse aid is automatically added during the last rinse, ensuring spot and streak free drying.

Attention!

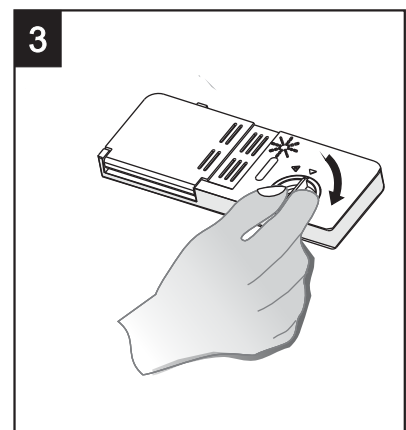
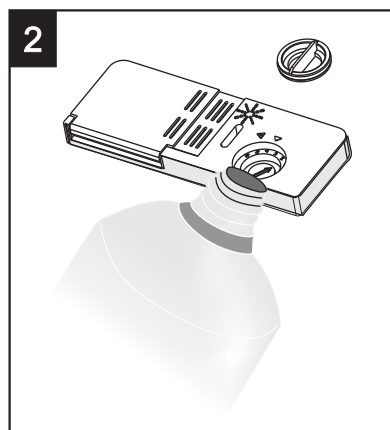
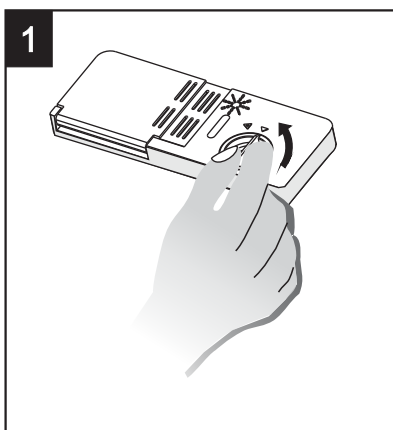
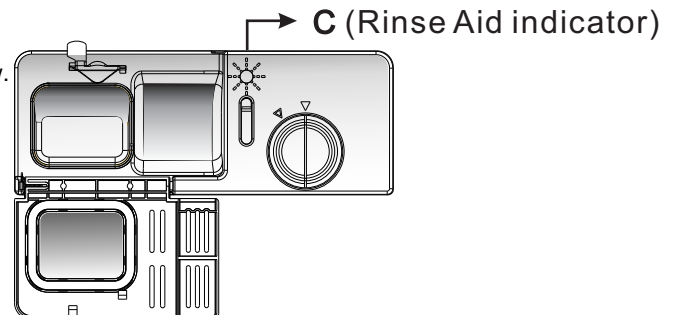
Only use branded rinse aid for dishwasher. Never fill the rinse aid dispenser with any other substances, such as dishwasher cleaning agent and liquid detergent. This would damage the appliance.

When to Refill the Rinse Aid Dispenser

If there is no rinse aid warning light in the control panel, you can judge the amount of rinse aid by the colour of the optical level indicator "C" located next to the cap. When the rinse aid container is full, the whole indicator will be dark. As the rinse aid diminishes, the size of the dark dot decreases. You should never let the rinse aid get below 1 / 4 full.

As the rinse aid diminishes, the size of the black dot on the rinse aid level indicator changes, as illustrated below.

- Full
- 3 / 4 full
- 1 / 2 full
- 1 / 4 full - Should refill to eliminate spotting
- Empty

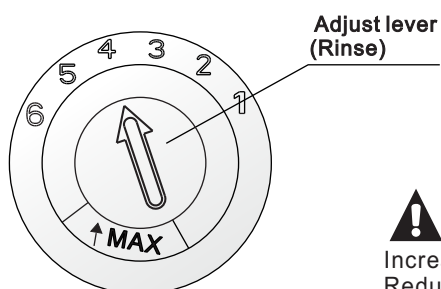


- 1** To open the dispenser, turn the cap left to open and lift it out.
- 2** Pour the rinse aid into the dispenser, being careful not to overfill.
- 3** Replace the cap by turning it right to close.

Be careful not to overfill the dispenser, because this could cause over sudsing. Wipe away any spills with a damp cloth. Don't forget to replace the cap before you close the dishwasher door.

! NOTE: Clean up any rinse aid spilled during filling with an absorbent cloth to avoid excessive foaming during the next wash. Don't forget to replace the cap before you close dishwasher door.

Adjusting Rinse Aid Dispenser



The rinse aid dispenser has four to six settings. Always start with the dispenser set on "4". If spots and poor drying are a problem, increase the amount of rinse aid dispensed by removing the dispenser lid and rotating the dial to "5". If the dishes are still not drying properly or are showing spots, adjust the dial to the next higher lever until your dishes are spot-free. The recommended setting is "4".

! NOTE: Increase the dose if there are drops of water or lime spots on the dishes after washing. Reduce it if there are sticky whitish stains on your dishes or a bluish film on glassware or knife blades.

B. Function of Detergent

Detergents with chemical ingredients are necessary to remove dirt, crush it and transport it out of the dishwasher. Most of the commercial quality detergents are suitable for this purpose.

Concentrated Detergent

Based on their chemical composition, detergents can be split in two basic types:

- conventional, alkaline detergents with caustic components
- low alkaline concentrated detergents with natural enzymes

The use of "normal" washing programs in combination with concentrated detergents reduces pollution and is good for your dishes. These wash programs are specifically matched to the dirt-dissolving properties of the enzymes of the concentrated detergent. For this reason, "normal" wash programs in which concentrated detergents are used can achieve the same results that can otherwise only be achieved using "intensive" programs.

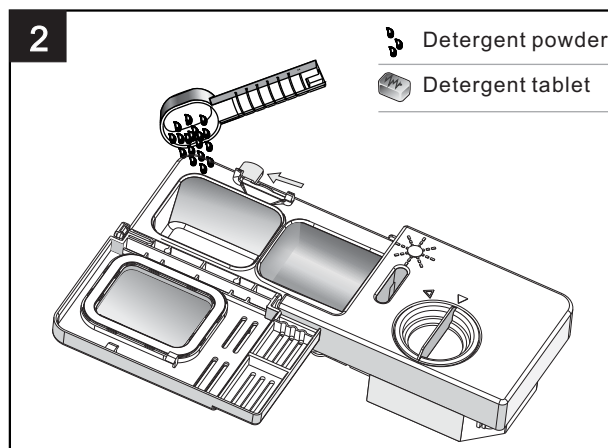
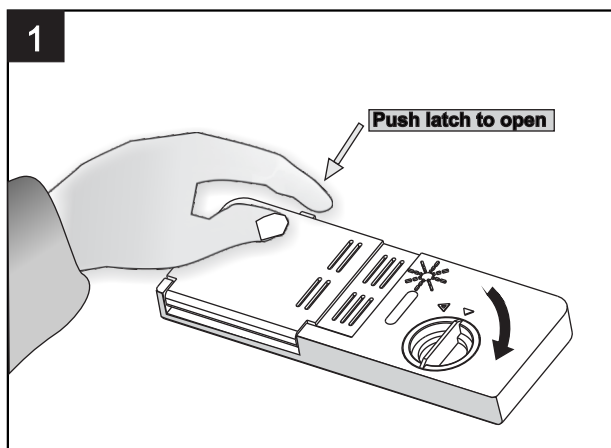
Detergent Tablets

Detergent tablets of different brands dissolve at different speeds. For this reason, some detergent tablets cannot dissolve and develop their full cleaning power during short programs. Therefore, please use long programs when using detergent tablets to ensure the complete removal of detergent residuals.

Detergent Dispenser

The dispenser must be refilled before the start of each wash cycle following the instructions provided in the wash cycle table. Your dishwasher uses less detergent and rinse aid than conventional dishwashers. Generally, only one tablespoon of detergent is needed for a normal wash load. More heavily soiled items need more detergent. Always add the detergent just before starting the dishwasher, otherwise it could get damp and will not dissolve properly.

Amount of Detergent to Use



! **NOTE:**

- If the lid is closed, push the latch to open.
- Always add the detergent just before starting each wash cycle.
- Only use branded detergent aid for dishwasher.

! **WARNING!**

Dishwasher detergent is corrosive! Take care to keep it out of reach of children.

Proper Use of Detergent

Use only detergent specifically made for use in dishwashers. Keep your detergent fresh and dry. Don't put powdered detergent into the dispenser until you are ready to wash dishes.

Fill in Detergent

Fill the detergent dispenser with detergent. The marking indicates the dosing levels.

- A** Fill with detergent for the main wash cycle.
- B** Fill with detergent when selecting the pre-wash cycle.

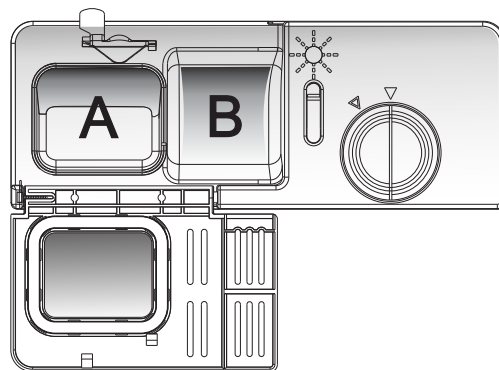
Please observe the manufacturers dosing and storage recommendations as stated on the detergent packaging.

Close the lid and press until it locks in place.

If the dishes are heavily soiled, place an additional detergent dose in the pre-wash detergent chamber. This detergent will take effect during the pre-wash phase.

! **NOTE:**

- You can find more information about the amount of detergent for the single program in the washing cycle table.
- Please be aware that according to the level of soiling and the specific hardness of water, differences are possible.
- Please observe the manufacturer's recommendations on the detergent packaging.



4. Loading the Dishwasher Baskets

Recommendations

- Consider buying kitchen utensils which are identified as dishwasher-proof.
- Use a mild detergent that is described as 'kind to dishes'. If necessary, seek further information from the detergent manufacturers.
- For particular items, select a program with as low a temperature as possible.
- To prevent damage, do not take glass and cutlery out of the dishwasher immediately after the program has ended.

For dishwasher wash, the following cutlery/dishes are

Not suitable

- Cutlery with wooden, bone China or mother-of-pearl handles
- Plastic items that are not heat resistant
- Older cutlery with glued parts that are not temperature resistant
- Bonded cutlery items or dishes
- Pewter or copper items
- Crystal glass
- Steel items subject to rusting
- Wooden platters
- Items made from synthetic fibres

Limited suitability

- Some types of glasses can become dull after a large number of washes
- Silver and aluminum parts have a tendency to discolour during washing
- Glazed patterns may fade if machine washed frequently

Attention before or after loading the Dishwasher Baskets

For best performance of the dishwasher, follow these loading guidelines.

Scrape off any large amounts of leftover food. Soften remnants of burnt food in pans.

It is not necessary to rinse the dishes under running water.

Place objects in the dishwasher in the following way:

1. Items such as cups, glasses, pots/pans, etc. are faced downwards.
2. Curved items, or ones with recesses, should be loaded aslant so that water can run off.
3. All utensils are stacked securely and can not tip over.
4. All utensils are placed in the way that the spray arms can rotate freely during washing.



NOTE: Very small items should not be washed in the dishwasher as they could easily fall out of the basket

- Load hollow items such as cups, glasses, pans etc. with the opening facing downwards so that water cannot collect in the container.
- Dishes and items of cutlery must not lie inside one another, or cover each other.
- To avoid damage to glasses, they must not touch.
- Load large items which are most difficult to clean into the lower basket.
- The upper basket is designed to hold more delicate and lighter dishware such as glasses, coffee and tea cups.
- Long bladed knives stored in an upright position are a potential hazard!
- Long and/or sharp items of cutlery such as carving knives must be positioned horizontally in the upper basket.
- Please do not overload your dishwasher. This is important for good results and for reasonable consumption of energy.

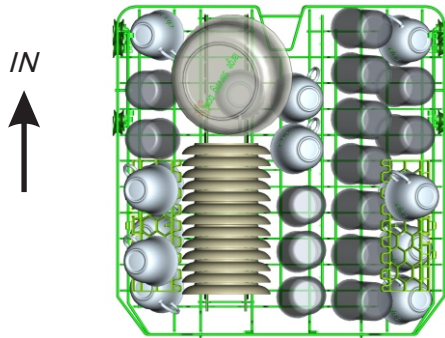
Removing the Dishes

To prevent water dripping from the upper basket into the lower basket, we recommend that you empty the lower basket first and then the upper basket.

The Method of Loading Normal Dishware

Loading the Upper Basket

The upper basket is designed to hold more delicate and lighter dishware such as glasses, coffee/teacups and saucers, as well as plates, small bowls and shallow pans (as long as they are not too dirty). Position the dishes and cookware so that they will not get moved by the spray of water.



Please be reminded that:

- Pots, serving bowls, etc, must always be placed top down.
- Deep pots should be slanted to allow water to flow out.
- The Bottom Basket features folding spikes so that larger or more pots and pans can be loaded.

Adjusting the Upper Basket

The height of the upper basket can be adjusted in order to create more space for the upper or lower basket. The height of the upper basket can be adjusted by lifting up the basket for the upper position, and by pressing the handle to lower the upper basket. Refer to the picture below.

Lift the basket
for upper position



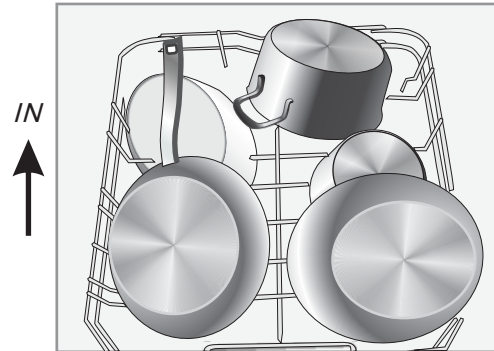
Press the handle
to lower the basket



Adjust handle

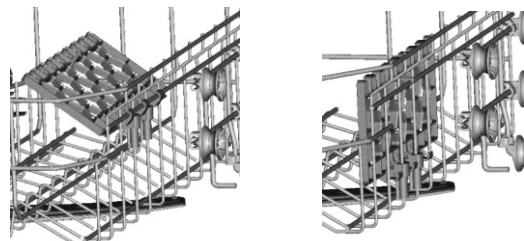
Loading the Lower Basket

We suggest that you place large items and the more difficult to clean items into the lower basket, such as pots, pans, lids, serving dishes and bowls, as shown in the figure below. It is preferable to place serving dishes and lids on the side of the racks in order to avoid blocking the rotation of the top spray arm.



Folding back the cup shelves

For better stacking of pots and pans, the spikes can be folded down as shown in the picture below.



Folding Spikes of Lower Basket

For better stacking of pots and pans, the spikes can be folded down as shown in the picture below.

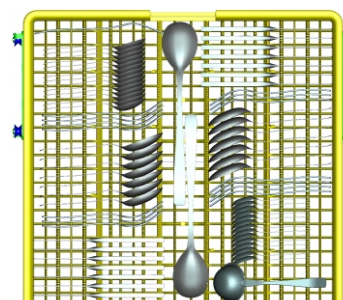


Cutlery Basket

Cutlery should be placed in the cutlery rack separate from each other in the appropriate positions, and make sure the utensils do not nest together as this may cause bad performance.

For top quality cleaning, place the silverware in the basket, making sure that:

- They do not sit together.
- Silverware is placed with the handles down and ends up.
- Long utensils in the middle.



5. Starting a Washing Program

Wash Cycle Table



NOTE: (★) means: need to fill rinse into the Rinse Aid Dispenser.

Program	Cycle Selection Information	Description of Cycle	Detergent pre/main	Running time(min)	Energy (Kwh)	Water (L)	Rinse Aid
Intensive 	For the heaviest soiled loads, such as pots, pans, casserole dishes and dishes that have been sitting with dried food on them for a while.	Pre-wash (50°C) Wash (65°C) Rinse Rinse Rinse Drying	$\frac{5}{27.5g}$ (Or All in 1)	165	1.4	16.5	★
Heavy 	For heavily soiled loads, such as pots, plates, glasses and lightly soiled pans.	Pre-wash (45°C) Wash (55°C) Rinse Rinse (60°C) Drying	$\frac{5}{27.5g}$ (Or All in 1)	175	1.2	13.5	★
Normal 	For normally soiled loads, such as pots, plates, glasses and lightly soiled pans. Standard daily cycle.	Pre-wash Wash (45°C) Rinse Rinse (50°C) Drying	$\frac{5}{27.5g}$ (Or All in 1)	160	0.71	13	★
Glass 	For lightly soiled loads, such as glasses, crystal and fine china.	Pre-wash Wash (40°C) Rinse Rinse (60°C) Drying	20g	115	0.85	13.5	★
1 Hour 	Daily wash in only 1 hour. For lightly and normally soiled plates and pans for everyday use.	Pre-wash (50°C) Wash (60°C) Rinse (50°C) Drying	$\frac{5}{27.5g}$	60	0.85	9	★
Rapid 	A shorter wash for lightly soiled loads that do not need drying.	Wash (40°C) Rinse Rinse (45°C)	20g	35	0.5	10	

Turning on the Appliance

Starting a wash cycle

1. Draw out the lower and upper basket, load the dishes and push them back. It is recommended to load the lower basket first, then the upper one (see the section entitled "Loading the Dishwasher").
2. Pour in the detergent (see the section entitled "Detergent and Rinse Aid").
3. Insert the plug into the socket. The power supply is 220-240 VAC/50HZ, the specification of the socket is 10A 250VAC. Make sure that the water supply is turned on to full pressure.
4. Open the door, press the ON/OFF button, and the power indicator light will turn on.
5. Press the program button to select the program. The wash programs changes as follows:
Intensive -> Heavy -> Normal -> Glass -> 1 Hour -> Rapid.
If a program is selected, the response light will light. Close the door to start the dishwasher.

Change the Program

Premise:

- A cycle that is underway can be modified only if it has been running for a short time. Otherwise, the detergent may have already been released, and the appliance may have already drained the wash water. If this is the case, the detergent dispenser must be refilled (see the section entitled "Loading the Detergent").
- Press the Start/Pause button to set the machine in standby mode. Press the program button more than 3 seconds to be able to change the program to the desired cycle setting (see the section entitled "Starting a washing program").



NOTE:

If you open the door during a wash cycle, the machine will pause. The program light will stop blinking and the buzzer will sound every minute until you close the door. After you close the door, the machine will start working after 10 seconds.

Forgot to Add a Dish?

A forgotten dish can be added any time before the detergent cup opens.

- 1 Open the door a little.
- 2 After the spray arms stop working, you can open the door completely.
- 3 Add forgotten dishes.
- 4 Close the door.
- 5 The dishwasher will run after 10 seconds.

At the End of the Wash Cycle

When the working cycle has finished, the buzzer will sound for 8 seconds, then stop. Turn off the appliance using the ON/OFF button, shut off the water supply and open the door of the dishwasher. Wait for a few minutes before unloading the dishwasher to avoid handling the dishes and utensils while they are still hot and more susceptible to breakage. They will also dry better.

■ Switch Off the Dishwasher

The program light is on but is not blinking, only in this case has the program ended.

1. Switch off the dishwasher by pressing the ON/OFF button.
2. Turn off the water tap!

■ Open the door carefully

Hot dishes are sensitive to knocks. Therefore, the dishes should be allowed to cool down around 15 minutes before removing from the dishwasher.

Open the dishwasher's door, leave it ajar and wait a few minutes before removing the dishes. This way, they will be cooler and the drying will be improved.

■ Unloading the dishwasher

It is normal that the dishwasher is wet inside.

Empty the lower basket first and then the upper one. This will avoid water dripping from the upper basket onto the dishes in the lower one.



WARNING!

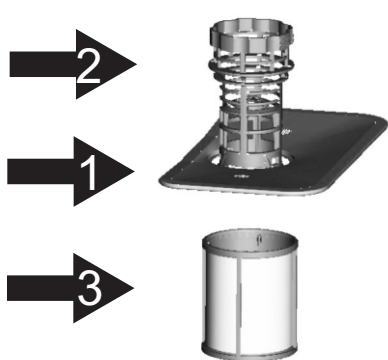
It is dangerous to open the door when washing, hot water or steam may scald you.

6. Maintenance and Cleaning

Filtering System

The filter prevents larger remnants of food or other objects from getting inside the pump. The residues may block the filter and they must be removed.

The filter system consists of a coarse filter, a flat (main filter), and a microfilter (fine filter).



Main filter 1

Food and soil particles trapped in this filter are pulverized by a special jet on the lower spray arm and washed down to drain.

Coarse filter 2

Larger items, such as pieces of bone or glass, that could block the drain are trapped in the coarse filter. To remove the items caught by the filter, gently squeeze the tap on the top of this filter and lift out.

Fine filter 3

This filter holds soil and food residues in the sump area and prevents it from being redeposit on the dishes during wash cycle.

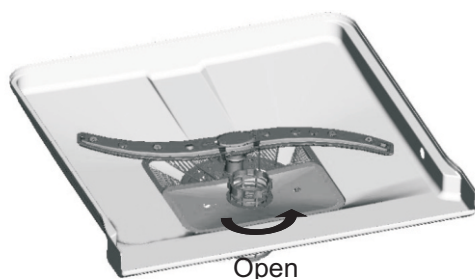
Filter assembly

The filter efficiently removes food particles from the wash water, allowing it to be recycled during the cycle. For best performance and results, the filter must be cleaned regularly. For this reason, it is a good idea to remove the larger food particles trapped in the filter after each wash cycle by rinsing the filters and under running water. To remove the filter device, pull the cup handle in the upward direction.

⚠ WARNING!

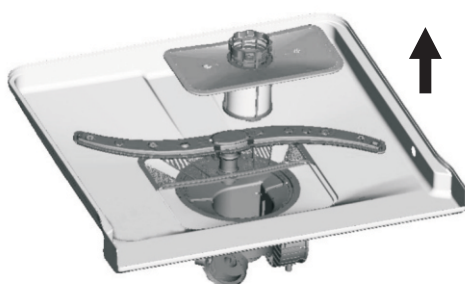
- The dishwasher must never be used without the filters.
- Improper replacement of the filter may reduce the performance level of the appliance and damage dishes and utensils.

1



Step 1: Turn the filter anti-clockwise.

2



Step 2: Lift the filter up.



NOTE: When following this procedure from step 1 to step 2, the filter system will be removed. When following it from Step 2 to Step 1, the filter system will be installed.

Remarks:

- Inspect the filters to prevent blockages each time after the dishwasher has been used.
- By unscrewing the coarse filter, you can remove the filter system. Remove any food remnants and clean the filters under running water.

! NOTE: The entire filter assembly should be cleaned once a week.

Cleaning the Filter

To clean the coarse filter and the fine filter, use a cleaning brush. Reassemble the filter parts as shown in the figures on the last page and reinsert the entire assembly in the dishwasher, positioning it in its seat and pressing downwards.

! WARNING!

When cleaning the filters, don't knock them. Otherwise, the filters could be contorted and decrease the dishwasher's performance.

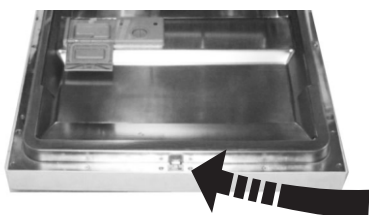
Caring for the Dishwasher

The control panel can be cleaned by using a lightly dampened cloth. After cleaning, make sure to dry it thoroughly.

For the exterior, use a good appliance polish wax.

Never use sharp objects, scouring pads or harsh cleaners on any of the dishwasher's parts.

Cleaning The Door



To clean the edge around the door, you should use only a soft, warm, damp cloth. To avoid water entering into the door lock and electrical components, do not use a spray cleaner of any kind.

! WARNING!

- Never use a spray cleaner to clean the door panel as it may damage the door lock and electrical components.
- Abrasive agents or some paper towels should not be used because of the risk of scratching or leaving spots on the stainless steel surface.

Protect Against Freezing

Please take frost protection measures on the dishwasher in winter. Every time after washing cycles, please operate as follows:

1. Switch off the dishwasher's electrical power.
2. Turn off the water supply and disconnect the water inlet pipe from the water valve.
3. Drain the water from the inlet pipe and water valve (use a pan to gather the water).
4. Reconnect the water inlet pipe to the water valve.
5. Remove the filter at the bottom of the tub and use a sponge to soak up water in the sump.

! NOTE: If your dishwasher cannot work because of ice, please contact professional service technicians.

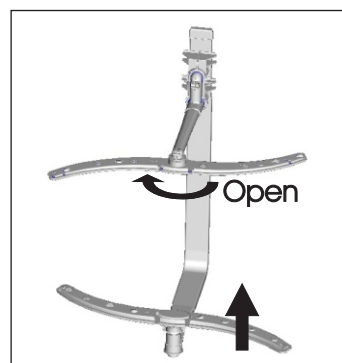
Cleaning the Spray Arms

It is necessary to clean the spray arms regularly as hard water and chemicals can clog the spray arm jets and bearings.

To remove the upper spray arm, hold the nut, and rotate the arm clockwise to remove it.

To remove the lower spray arm, pull out the spray arm upward.

Wash the arms in soapy and warm water and use a soft brush to clean the jets. Replace them after rinsing thoroughly.



How to Keep Your Dishwasher in Shape

■ After Every Wash

After every wash, turn off the water supply to the appliance and leave the door slightly open so that moisture and odours are not trapped inside.

■ Remove the Plug

Before cleaning or performing maintenance, always remove the plug from the socket.

■ No Solvents or Abrasive Cleaning

To clean the exterior and rubber parts of the dishwasher, do not use solvents or abrasive cleaning products. Only use a cloth with warm soapy water. To remove spots or stains from the surface of the interior, use a cloth dampened with water and a little vinegar, or alternatively, a cleaning product made specifically for dishwashers.

■ When not in Use for a Long Time

It is recommended that you run a wash cycle with the dishwasher empty and then remove the plug from the socket, turn off the water supply, and leave the door of the appliance slightly open. This will help the door seals last longer and prevent odours from forming within the appliance.

■ Moving the Appliance

If the appliance must be moved, try to keep it in the vertical position. If absolutely necessary, it can be positioned on its back.

■ Seals

One of the factors that cause odours to form in the dishwasher is food that remains trapped in the seals. Periodic cleaning with a damp sponge will prevent this from occurring.

7. Installation instructions

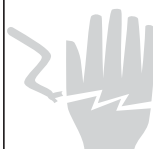
Positioning the Appliance

Attention:

The installation of the pipes and electrical equipments should be done by professionals.



Warning



Electrical Shock Hazard
Disconnect electrical power before installing the dishwasher.

Failure to do so can result in death or electrical shock.

Installation preparation

The installation position of the dishwasher should be near the existing inlet, drain hoses, and power cord. One side of the cabinet sink should be chosen to facilitate the connection of drain hoses of the dishwasher.

Note: please check the accompanying installation accessories (hook for aesthetic panel, screw).

Please read the installation instructions carefully.

Preparations should be made before moving the dishwasher to the installation place.

1. Choose a place near the sink to facilitate the installation of inlet and drain hoses (see figure 1).
2. If dishwasher is installed at the corner of the cabinet, there should be some space (see figure 2) when the door is opened.

Figure 1

Cabinet dimensions:
less than 5mm
between the top of
the dishwasher and
the cabinet, as well
as the outer door
aligned to the
cabinet

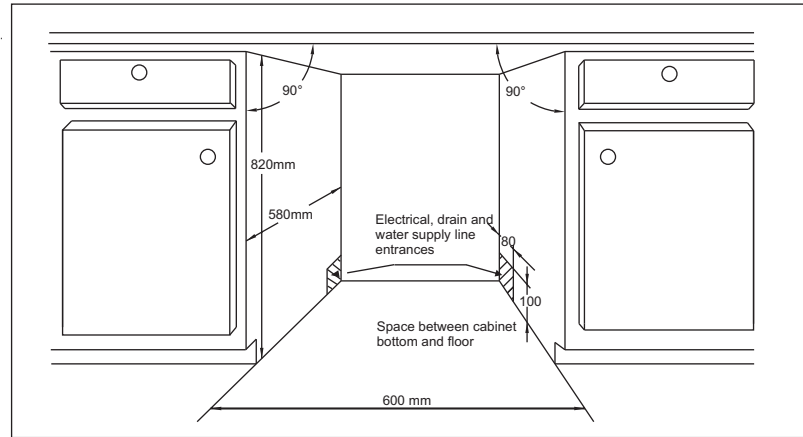
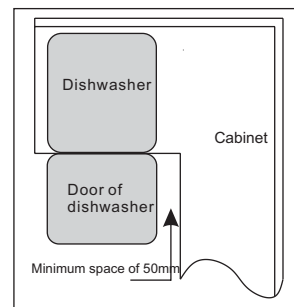


Figure 2

Minimum space of
50mm when the door is
opened

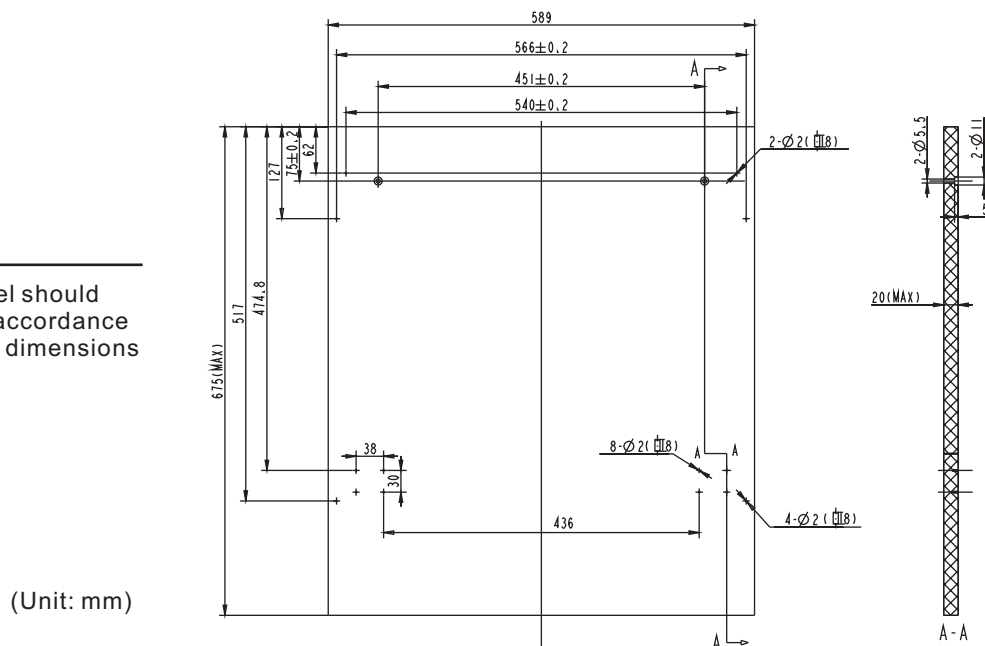


Aesthetic Panel's Dimensions and Installation

The aesthetic wooden panel could be constructed according to Figure 3.

Figure 3

The aesthetic panel should
be constructed in accordance
with the illustrated dimensions



(Unit: mm)

Install the hook on the aesthetic wooden panel and put the hook into the slot of the outer door of the dishwasher (see figure 4a). After positioning the panel, fix the panel onto the outer door by screws and bolts (see figure 4b).

Figure 4a

Installation of aesthetic panel

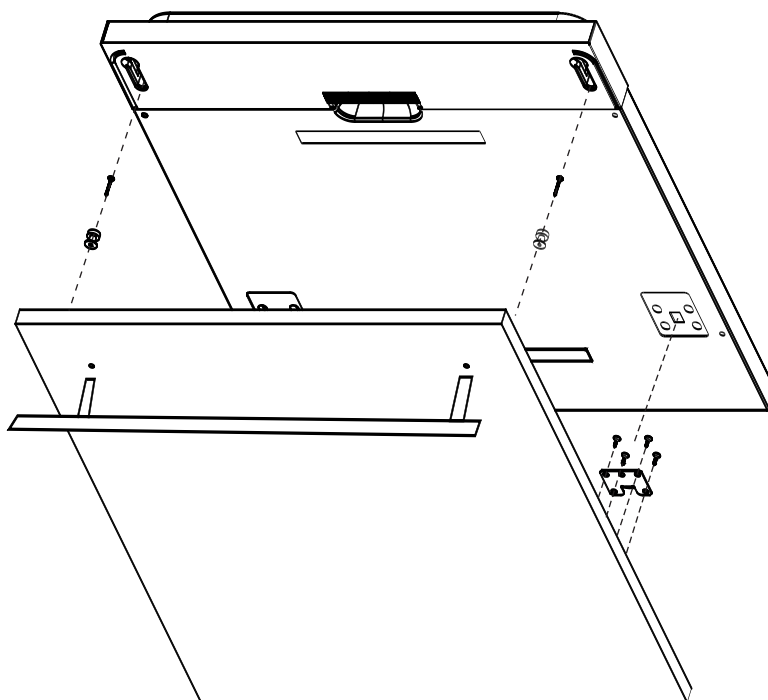
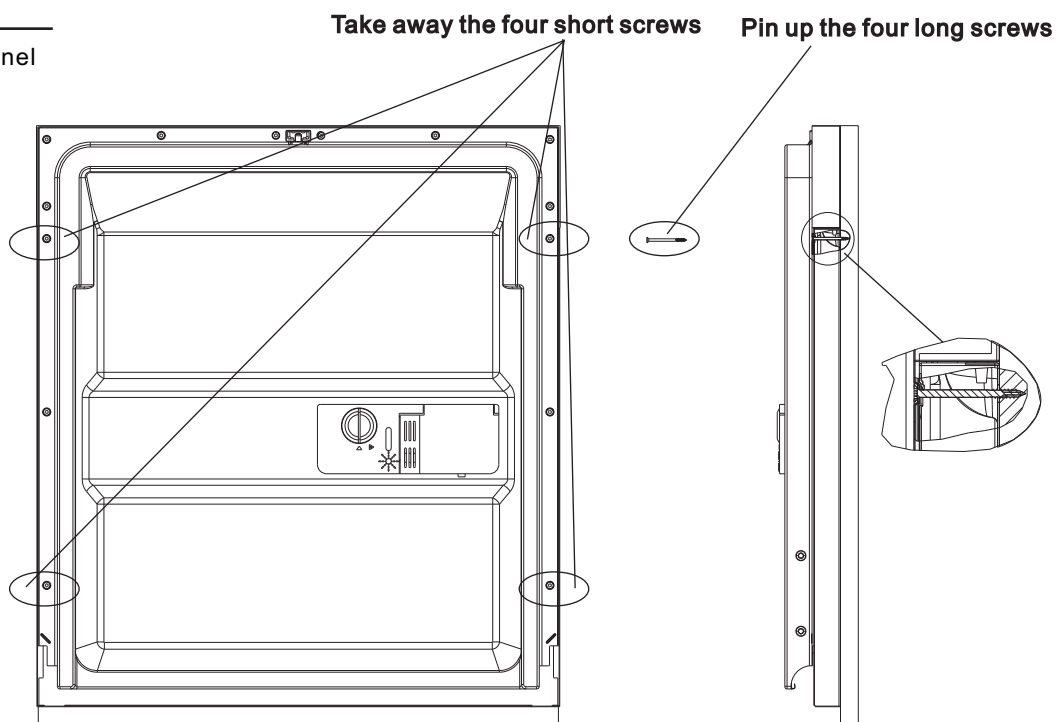


Figure 4b

Installation of aesthetic panel

1. Take away the four short screws
2. Pin up the four long screws



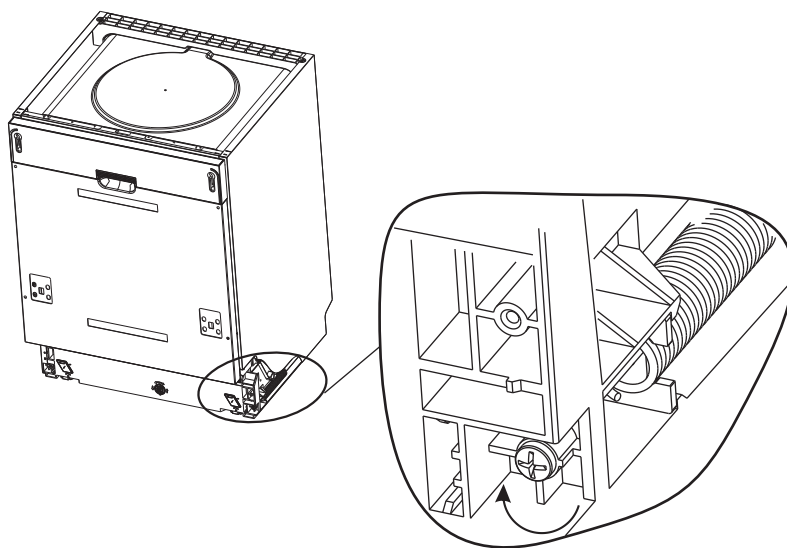
Tension Adjustment of the Door Spring

The door springs are set at the factory to the proper tension for the outer door. If an aesthetic wooden panel is installed, you will have to adjust the door spring tension. Rotate the adjusting screw to drive the adjustor to strain or relax the steel cable (see figure 5).

Door spring tension is correct when the door remains horizontal in the fully opened position, and rises to a close with the lift of a finger.

Figure 5

Tension adjustment
of the door spring



Drain Hose Connection

Insert the drain hose into a drain pipe with a minimum diameter of 40mm, or let it run into the sink, making sure to avoid kinking or squashing it. The top of the hose must be less than 1000mm high.

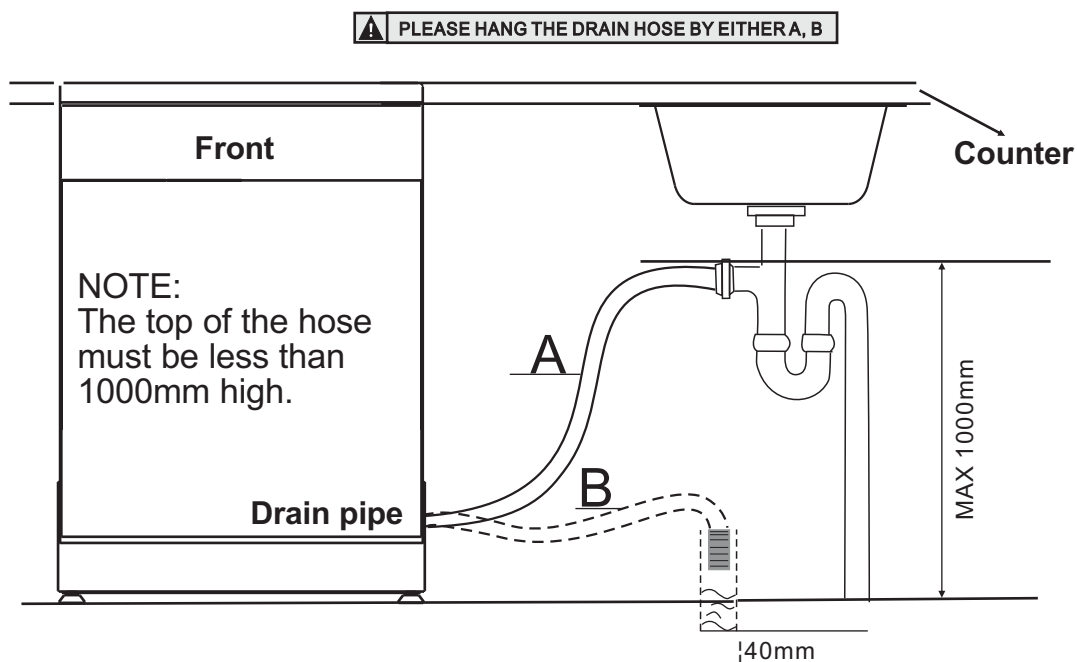


Figure 6

Drain hose connection

Dishwasher Installation Steps

1. Install the furniture door/aesthetic wooden panel to the outer door of the dishwasher using the brackets provided.
2. Adjust the tension of the door springs by using an Allen key, turning clockwise to tighten the left and right door springs. Failure to do this could cause damage to your dishwasher (illustration 2).
3. Connect the inlet hose to the cold water supply.
4. Connect the drain hose. Refer to Figure 6).
5. Connect the power cord.
6. Affix the condensation strip under the work surface of cabinet. Please ensure the condensation strip is flush with the edge of the work surface.
7. Place the dishwasher into position (illustration 4).
8. Level the dishwasher. The rear foot can be adjusted from the front of the dishwasher by turning the Allen screw in the middle of the base of the dishwasher (illustration 5A). To adjust the front feet, use a flat screw driver and turn the front feet until the dishwasher is level (illustration 5B).
9. The dishwasher must be secured in place. There are two ways to do this:
 - A.** Normal work surface: Put the right (left) installation hook into the slot of the right (left) side plane and secure it to the work surface with two woodscrews (illustration 6).
 - B.** Marble or granite work top: Bend the right (left) installation hook into a right-angle, put it into the slot of the right (left) side plane, and secure it to the work surface with two woodscrews (illustration 7).

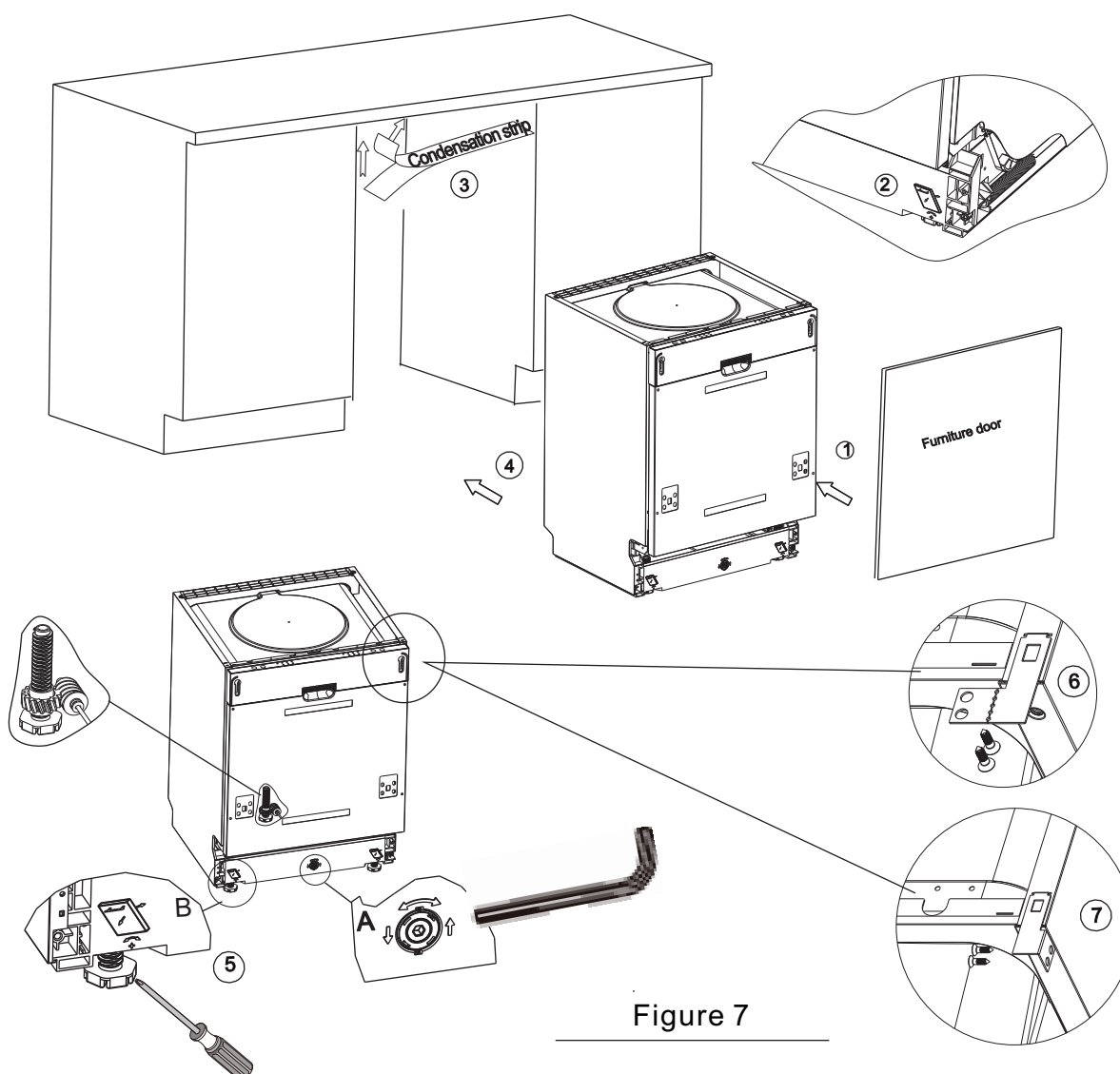


Figure 7

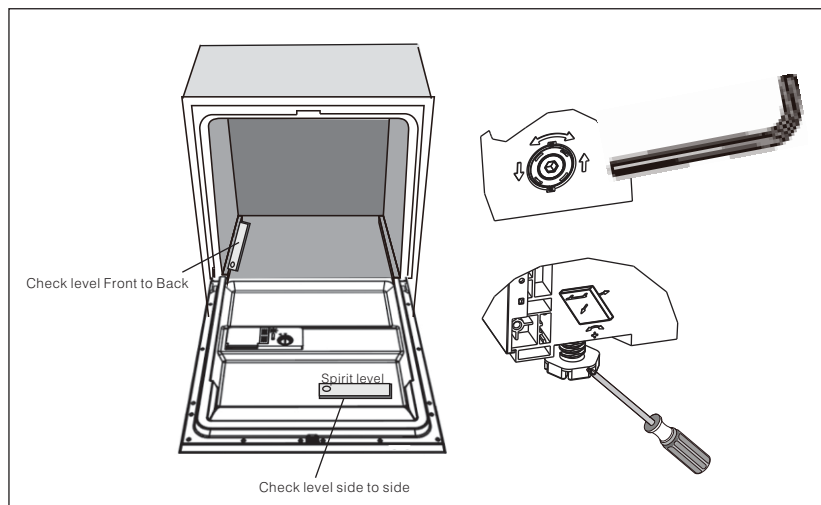
Dishwasher must be levelled for proper dishrack operation and washing performance.

1. Place a spirit level on the door and rack track inside the tub as shown to check that the dishwasher is level.
2. Level the dishwasher by adjusting the three levelling legs individually.
3. When levelling the dishwasher, please pay attention not to let the dishwasher tip over.

Figure 8

Illustration of feet adjustment

NOTE:
The maximum adjustment height of the feet is 50mm



About Electricity Connection

⚠ WARNING!

For personal safety:
DO NOT USE AN EXTENSION CORD OR AN ADAPTER PLUG WITH THIS APPLIANCE.
DO NOT, UNDER ANY CIRCUMSTANCES, CUT OR REMOVE THE EARTHING CONNECTION FROM THE POWER CORD.

Electrical Requirements

Please look at the rating label to know the rating voltage and connect the dishwasher to the appropriate power supply. Use the required fuse 10 amp, time delay fuse or circuit breaker recommended, and provide separate circuit serving only this appliance.

Electrical Connection

⚠ Ensure proper ground exists before use

Ensure the voltage and frequency of the electric power corresponds to those on the rating plate. Only insert the plug into an electrical socket which is earthed properly. If the electrical socket to which the appliance must be connected is not appropriate for the plug, replace the socket rather than using adaptors or the like as they could cause overheating and burns.



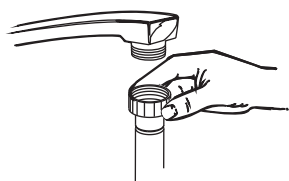
GROUNDING INSTRUCTIONS

This appliance must be earthed. In the event of a malfunction or breakdown, earthing will reduce the risk of electric shock by providing a path of least resistance for the electric current. This appliance is equipped with a cord with an equipment earthing conductor and an earthing plug. The plug must be plugged into an appropriate outlet that is installed and earthed in accordance with all local standards and requirements.

⚠ WARNING!

Improper connection of the equipment grounding conductor can result in the risk of an electric shock. Check with a qualified electrician or service agent if you are in doubt whether the appliance is properly grounded. Do not modify the plug provided with the appliance. If the plug does not fit properly into the outlet, please have a qualified electrician to install a proper outlet.

Cold Water Connection



Connect the cold water supply hose to a threaded 3/4(inch) connector and make sure that it is fastened tightly in place. If the water pipes are new or have not been used for an extended period of time, let the water run to make sure that the water is clear. This precaution is needed to avoid the risk of the water inlet being blocked and damaging the appliance.

⚠ **WARNING!**

Please close the hydrant after using.

Positioning the Appliance

Position the appliance in the desired location. The back should rest against the wall behind it, and the sides along the adjacent cabinets or walls. The dishwasher is equipped with water supply and drain hoses that can be positioned either to the right or the left sides to facilitate proper installation.

How to Drain Excess Water From Hoses

If the sink is 1000mm higher from the floor, the excess water in hoses cannot be drained directly into the sink. It will be necessary to drain excess water from hoses into a bowl or suitable container that is held outside and lower than the sink.

Water Outlet

Connect the water drain hose. The drain hose must be correctly fitted to avoid water leaks. Ensure that the water inlet hose is not squashed.

Extension Hose

If you need a drain hose extension, make sure to use a similar drain hose. It must be no longer than 4 metres, otherwise the cleaning effect of the dishwasher could be reduced.

Syphon Connection

Insert the drain hose into a drain pipe with a minimum diameter of 40mm, or let it run into the sink, making sure to avoid kinking or squashing it. The top of the hose must be less than 1000mm.

Start of Dishwasher

The following things should be checked before starting the dishwasher.

- The dishwasher is levelled and fixed properly
- The inlet valve is open
- There is no leakage at the connections of the hoses
- The power plug is fitted correctly
- The power is switched on
- The inlet and drain hoses are not kinked
- All packing materials and printings are taken out of the dishwasher



Attention: *After installation, please make sure to retain this manual.*

The content of this manual is very helpful to users.

8. Troubleshooting Tips

Before Calling for Service

Reviewing the charts on the following pages may save you from calling for service.



	<i>Problem</i>	<i>Possible Causes</i>	<i>What To Do</i>
Technical problems	<i>Dishwasher doesn't start</i>	Fuse blown, or the circuit breaker acted	Replace fuse or reset circuit breaker. Remove any other appliances sharing the same circuit with the dishwasher.
		Power supply is not turned on	Make sure the dishwasher is turned on and the door is closed securely. Make sure the power cord is plugged properly into the wall socket.
		Error code: E1; Water pressure is low	Check that the water supply is connected properly and the water is turned on.
		Door of dishwasher not properly closed.	Make sure to close the door properly and latch it.
	<i>Water not pumped from dishwasher</i>	Kink in drain hose	Check drain hose.
General problems		Filter clogged	Check coarse the filter (see section titled "Cleaning the Filter").
		Kitchen sink clogged	Check the kitchen sink to make sure it is draining well. If the problem is the kitchen sink not draining, you may need a plumber rather than a serviceman for dishwashers.
	<i>Suds in the tub</i>	Improper detergent	Use only special dishwasher detergent to avoid suds. If this occurs, open the dishwasher and let suds evaporate. Add 1 gallon of cold water to the tub. Close and latch the dishwasher, then select any cycle. Dishwasher will drain out the water at the first step. Open the door after draining stopped and check if the suds is disappeared. Repeat if necessary.
		Spilled rinse aid	Always wipe up rinse aid spills immediately.
	<i>Stained tub interior</i>	Detergent with colourant was used	Make sure that the detergent is the one without colourant.
	<i>White film on inside surface</i>	Hard water minerals	To clean the interior, use a damp sponge with dishwasher detergent and wear rubber gloves. Never use any other cleaner than dishwasher detergent to avoid the risk of foaming or suds.
	<i>There are rust stains on cutlery</i>	The affected items are not corrosion resistant	
Noise		A program was not ran after dishwasher salt was added and traces of salt have gotten into the cycle	Always run the quick wash program without any crockery in the dishwasher after adding dishwasher salt.
	<i>Knocking noise in the wash cabinet</i>	A spray arm is knocking against an item in a basket	Interrupt the program, and rearrange the items which are obstructing the spray arm.
	<i>Rattling noise in the wash cabinet</i>	Items of crockery are loose in the wash cabinet	Interrupt the program, and rearrange the items of crockery.
	<i>Knocking noise in the water pipes</i>	This may be caused by on-site installation or the cross-section of the piping	This has no influence on the dishwasher function. If in doubt, contact a suitably qualified plumber.



Unsatisfactory washing result

<i>Problem</i>	<i>Possible Causes</i>	<i>What To Do</i>
<i>The dishes are not clean</i>	The dishes were not loaded correctly	See notes in "Loading the Dishwasher Baskets".
	The program was not powerful enough	Select a more intensive program. See "Wash Cycle Table".
	Not enough detergent was dispensed	Use more detergent, or change your detergent.
	Items are blocking the path of spray arms	Rearrange the items so that the sprays can rotate freely.
	The filter combination is not clean or is not correctly fitted. This may cause the spray spray arm jets to get blocked	Clean and/or fit the filter combination correctly. Clean the spray arm jets. See "Cleaning the Spray Arms".
<i>Cloudiness on glassware</i>	Combination of soft water and too much detergent	Use less detergent if you have soft water and select a shorter cycle to wash the glassware.
<i>Black or gray marks on dishes</i>	Aluminum utensils have rubbed against dishes	Use a mild abrasive cleaner to eliminate those marks.
<i>Detergent left in dispenser cups</i>	Dishes block detergent cups	Reload the dishes properly.

Unsatisfactory drying result

<i>The dishes are not drying</i>	Improper loading	Load the dishwasher as suggested in the directions.
	Too little rinse aid	Increase the amount of rinse aid/refill the rinse aid dispenser.
	Dishes are removed too soon	Do not empty your dishwasher immediately after washing. Open the door slightly so that the steam can escape. Begin unloading the dishwasher only once the dishes are barely warm to the touch. Empty the lower basket first. This prevents water from dripping off dishes in the upper basket.
	Wrong program has been selected	In shorter programs, the washing temperature is lower. This also lowers cleaning performance. Choose a program with a longer wash time.
	Use of cutlery with a low-quality coating	Water drainage is more difficult with these items. Cutlery or dishes of this type are not suitable for washing in the dishwasher.

Error Codes

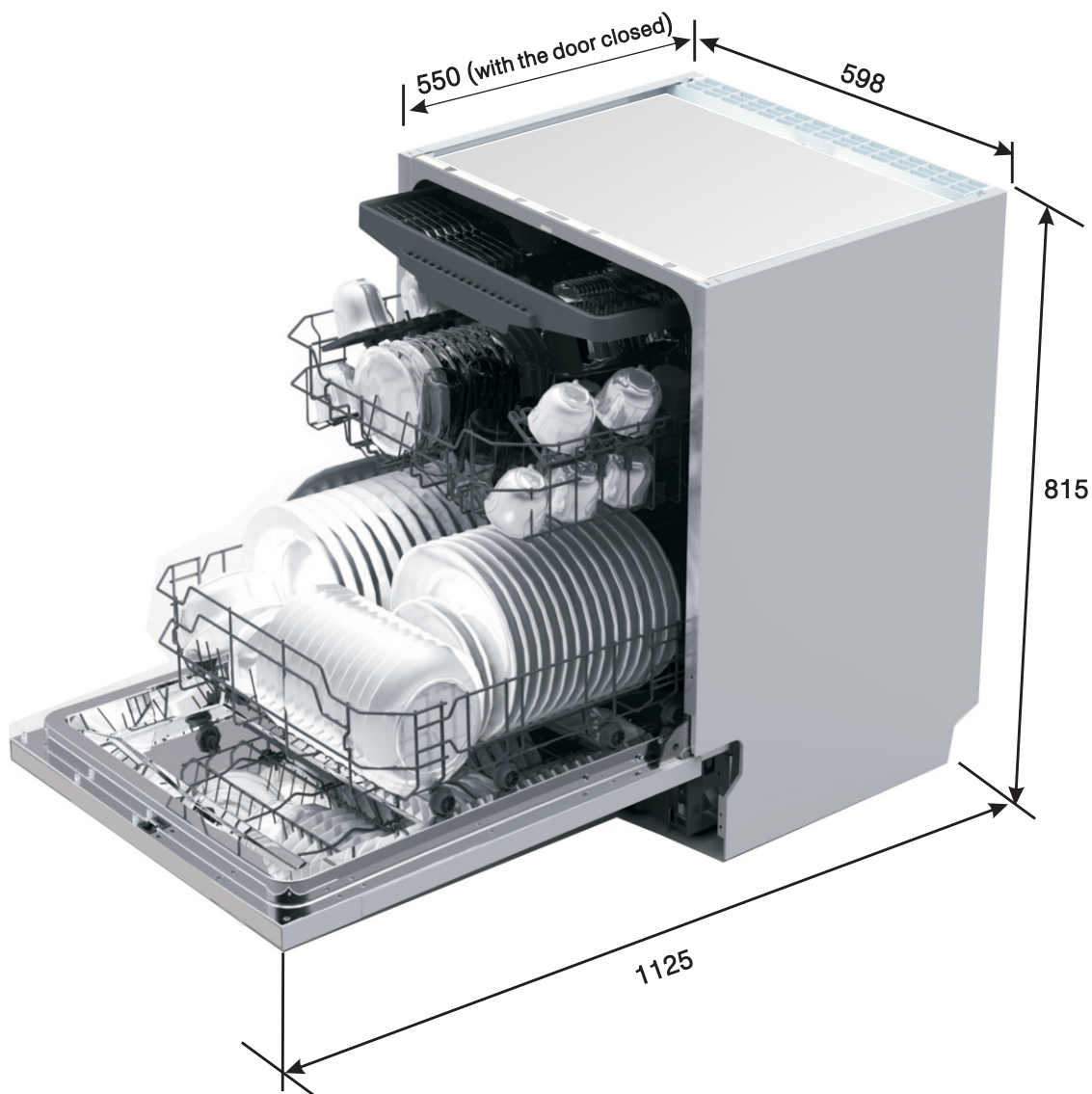
When some malfunctions come on, the appliance will display error codes to warn you:

<i>Codes</i>	<i>Meanings</i>	<i>Possible Causes</i>
E1	Longer inlet time.	Water tap is not opened, water intake is restricted, or water pressure is too low.
E4	Overflow.	Some element of dishwasher leaks.
E8	Failure of orientation of distributary valve.	Open circuit or break of distributary valve.

⚠ WARNING!

- If overflow occurs, turn off the main water supply before calling a service.
- If there is water in the base pan because of an overflow or small leak, the water should be removed before restarting the dishwasher.

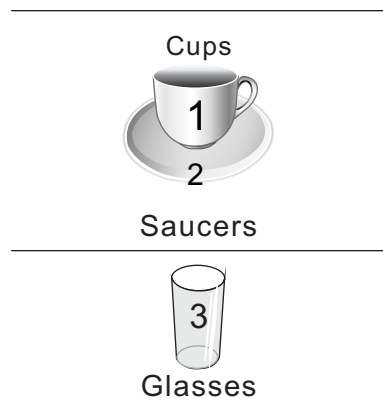
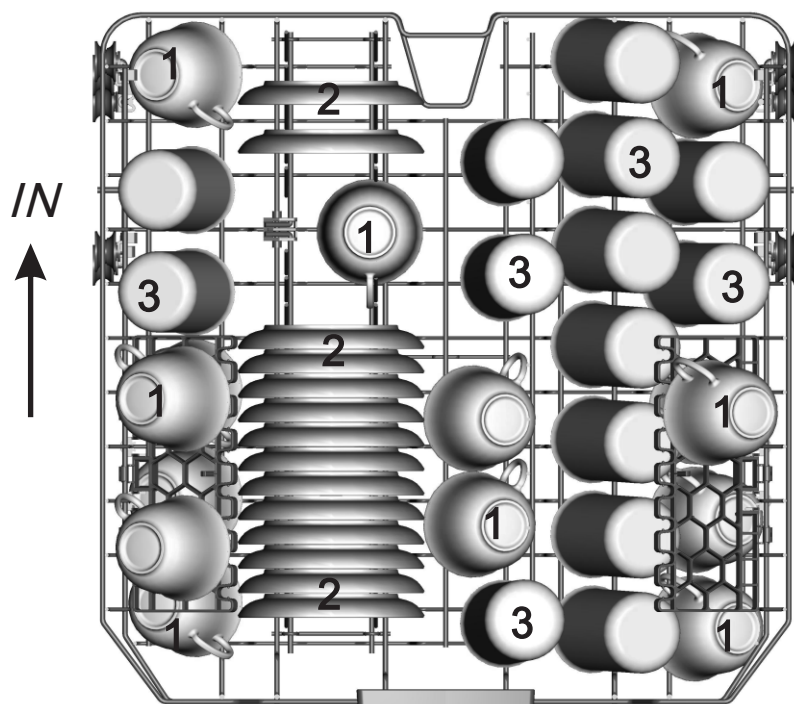
Technical Information



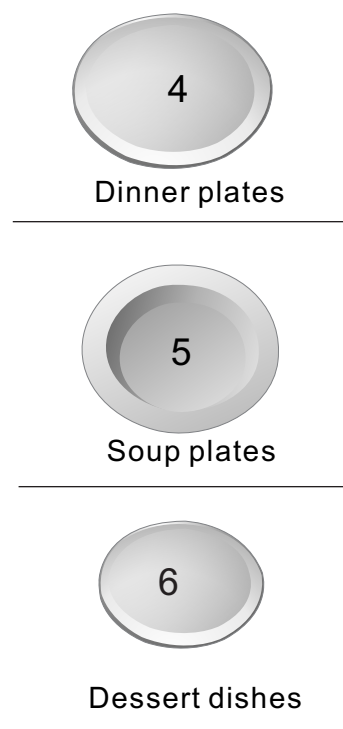
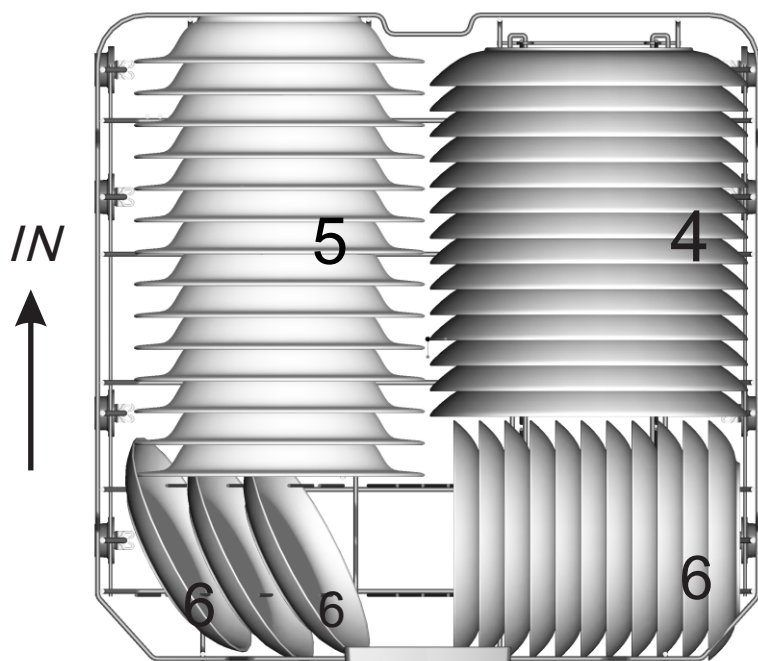
Height:	815mm
Width:	598 mm
Depth:	550mm (with the door closed)
Water pressure:	0.04-1.0MPa
Power supply:	see rating label
Capacity:	14 place settings

Loading the Baskets

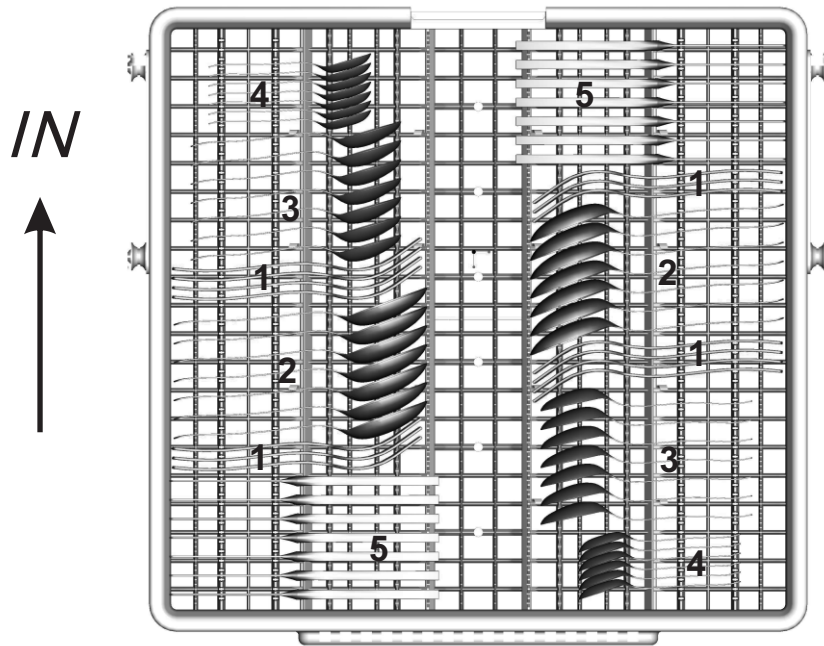
1. Upper basket:



2. Lower basket:



3. Cutlery basket:



1 Forks



5 Knives



2 Soup spoons



3 Dessert spoons



4 Teaspoons



Information for comparability tests in accordance with (*AS/NZS 2007.1)

- Capacity: 14 place settings
- Position of the upper basket: lower position
- Program: Normal
- Rinse aid setting: 6 or max
- Open the door slightly 50mm to assist in drying of the dishes after every wash